



# Events 2024

## Cornwall Research School

At Mounts Bay Academy, Penzance



# ABOUT US



Supported by the Education Endowment Foundation

Mounts Bay Academy are delighted to host Cornwall Research School (CRS). After four years as an Associate Research School (RS,) working closely with colleagues from Kingsbridge RS, we are pleased to be able to continue supporting schools in Cornwall and the Southwest region.

The mission of the Education Endowment Foundation (EEF) and CRS is to break the link between family income and educational achievement by using research evidence to inform pedagogy, teaching practice and pupil learning.



The Education Endowment Foundation (EEF) is an independent charity dedicated to breaking the link between family income and educational achievement.

We do this by supporting schools to improve teaching and learning through better use of evidence.

The EEF, support schools, nurseries and colleges to improve teaching and learning for two – 19-year-olds through better use of evidence.

We do this by:

- Summarising evidence. Reviewing the best available evidence on teaching and learning and presenting in an accessible way.
- Finding new evidence. Funding independent evaluations of programmes and approaches that aim to raise the attainment of children and young people from socio-economically disadvantaged backgrounds.
- Putting evidence to use. Supporting education practitioners, as well as policymakers and other organisations, to use evidence in ways that improve teaching and learning.



# HOW WE WILL SUPPORT SCHOOLS

Over the next three years of regional work, CRS will support schools through:

- Partnerships that are sustained, place based and evidence informed
- Communication of research evidence
- Exemplification of evidence into practice
- Working with and through others
- Early stage programme development

CRS will be engaging with schools and education professionals through a variety of means, including:

- Face to face events
- Webinars
- Blogs
- Newsletters
- Podcasts
- Videos (YouTube)

**The Research Schools  
Network aims to lead the  
way in the use of  
evidence-based teaching,  
building affiliations with  
large numbers of schools  
in their region, and  
supporting the use of  
evidence at scale.**



3:30pm to 5pm

# Evidence Briefings Calendar

24th Jan Secondary Science	1st Feb Primary Science	13th Mar Working with parents	18th Apr Making best use of teaching assistants	9th May Implementation
Free evidence briefings	21st Feb Maths KS2/3	20th Mar Learning behaviours	24th Apr Teacher feedback	Register for each one here 

## Notes

Each session explores the EEFs key evidence around the theme

Discuss the evidence in terms of its practical and contextual implications

Examples, explanations, and resources to support putting recommendations into practice.

# Improving Primary Science



## A WORKSHOP DAY FOR PRIMARY SCHOOLS

9TH FEBRUARY, 9:30 - 15:00, £50 PER PERSON INC. LUNCH



High quality science teaching builds pupils' curiosity and critical thinking, helping them to build a coherent understanding of the world around them.



Primary science teaching plays a crucial role in shaping pupils' attitudes towards the subject, nurturing participation that can support future pathways into science, technology engineering and mathematics (STEM) fields.

### Led by:

- Hannah Cox, Kingsbridge Research School
- Jon Eaton, Kingsbridge Research School
- John Rodgers, Cornwall Research School



### OUTCOMES

Engage with the evidence behind the EEF's new Improving Primary Science guidance report and walk away with actionable approaches to curriculum and teaching.



### WHO FOR?

- Science leads
- Classroom teachers
- Head teachers and other staff with leadership responsibility in primary schools.



### WHERE?

China Fleet Country Club, Saltash,  
Cornwall PL12 6LJ

## REGISTER



SCAN ME

<https://forms.gle/uVtWwgANoIoNmwy9>

## CONTACT US



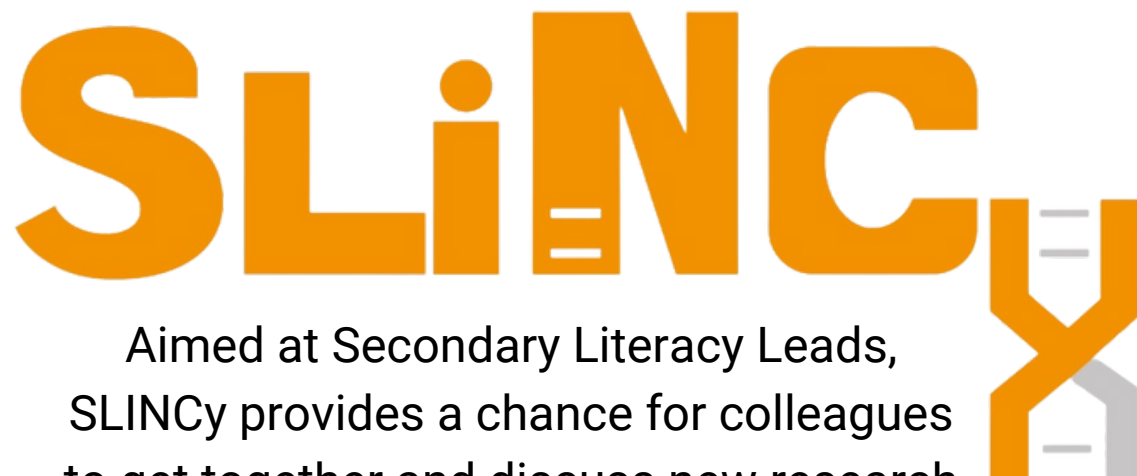
<https://researchschool.org.uk/kingsbridge>



[Alison.king@kingsbridgecollege.org.uk](mailto:Alison.king@kingsbridgecollege.org.uk)



# Secondary Literacy Implementation Network Cornwall



Aimed at Secondary Literacy Leads, SLiNCy provides a chance for colleagues to get together and discuss new research evidence around secondary literacy, the practical implications of the research and ways of overcoming barriers to successful implementation and securing impactful practice change and outcomes.



**@ St Austell Conference Centre**

**Friday 1st March**

**9am - 3pm**

**£35pp including lunch & refreshments**

**BOOK NOW**

[https://researchschool.org.uk/  
cornwall/event/slincy](https://researchschool.org.uk/cornwall/event/slincy)





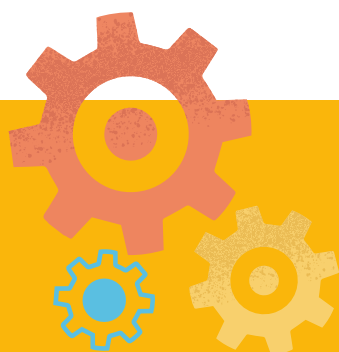
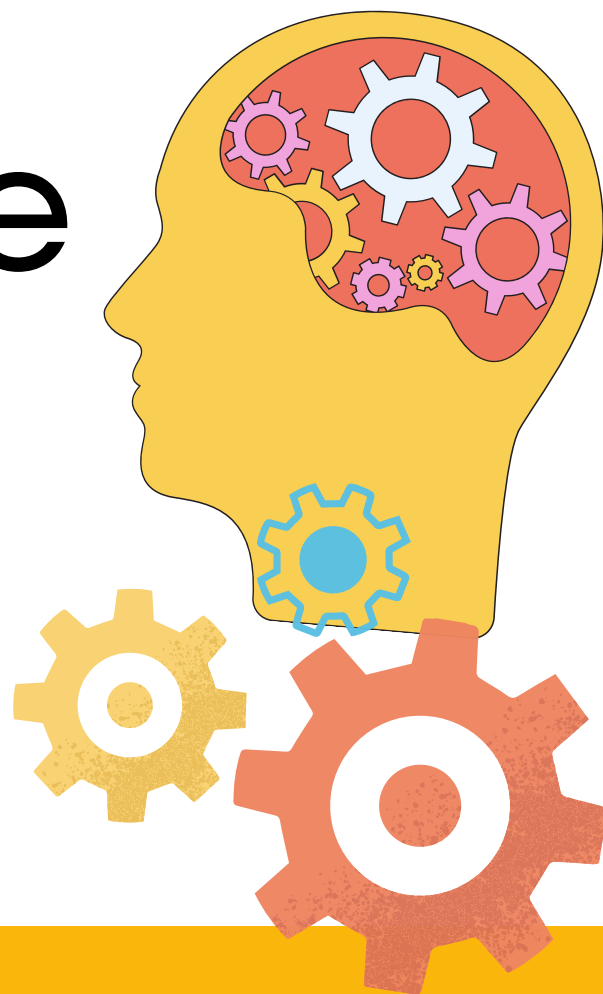
**Cornwall**  
Research  
School

Supported by the Education Endowment Foundation

One-day conference

# Cognitive Science

Find out how the EEF's research findings can support your impactful implementation.



Book now

*"Cognitive science principles of learning can have a real impact on rates of learning in the classroom. There is value in teachers having working knowledge of cognitive science principles."*



**Friday**  
15th March

9:00am to 3:00pm

@ St. Austell Conference Centre

£100pp including lunch & drinks

# METACOGNITION

## One-day conference

Examine research findings and key evidence around Metacognition

### Who for?

Primary & Secondary School senior leaders and teachers responsible for staff development.

### Register



Friday 14th June  
9:00am to 3:00pm



@ St. Austell  
Conference Centre



£100 pp including lunch  
& refreshments



*Evidence suggests the use of 'metacognitive strategies' – which get pupils to think about their own learning – can be worth the equivalent of an additional +7 months' progress when used well.*



**Cornwall**  
Research  
School

Supported by the Education Endowment Foundation



# Implementation Workshop

## Exploring the new EEF guidance report launching Spring 2024



**Friday 21st June  
2024**



**China Fleet Country Club, Saltash,  
Cornwall, PL12 6LJ**



**9:30-15:00**



**£100pp including  
lunch**

### Keynote speaker Professor Jonathan Sharples

Professor Jonathan Sharples is Professorial Research Fellow at the EEF. Prof. Sharples co-authored "Putting Evidence to Work: a School's Guide to Implementation" and is leading the team conducting the evidence review that underpins the new EEF guidance around implementation.

### Purpose & Outcomes

- Exploration of the evidence underpinning the new Guidance Report on implementation
- Develop an understanding of how to do implementation well

### Who for?

- Head Teachers
- Senior Leaders
- Implementation Leads
- Those interested in developing their understanding of Implementation

### Also Including:

- Jon Eaton, Kingsbridge Research School (co-author of the new guidance report)
- Helen Thorneycroft, Deputy Director of Kingsbridge Research School
- John Rodgers, Cornwall Research School

## Register

<https://bit.ly/implementationworkshop>



[info.cornwall@researchschool.org.uk](mailto:info.cornwall@researchschool.org.uk)

## SCAN ME



# Effective Professional Development

Friday 5th July

9am - 3:30pm

@ St. Austell Conference

£100pp incl. lunch and refreshments



Ensuring that teachers are provided with high quality professional development opportunities is crucial to improving pupil outcomes.

Join Cornwall Research School to explore the evidence and recommendations and be supported in creating your own Effective PD programme that considers the context and needs of your school.

Book your  
place  
now



Supported by the Education Endowment Foundation

# MEET THE TEAM



Supported by the Education Endowment Foundation

CRS is led by Director John Rodgers, supported by a core team of Deputy Director Luca Owenbridge and Project Coordinator Victoria Mitchell. CRS has an extended team of Evidence Leaders of Education (ELEs) and Evidence Advocates who are all outstanding practitioners and represent a range of contexts, phases and subject disciplines.



**JOHN  
RODGERS**

Director of Cornwall Research School

John has been a teacher for 24 years, the last 19 in Cornwall. He currently works as the Assistant Principal at Mounts Bay Academy, Penzance. He is also Content Lead for Secondary Literacy for the RS Network.

John is interested in supporting schools to make evidence-informed decisions by gathering and interpreting data to identify priorities, exploring approaches to meet those priorities and implementing them effectively. He has provided extensive support to schools across the Southwest on a range of issues, including SEN, Metacognition, Learning Behaviours and Secondary Literacy. He is particularly interested in supporting schools with evidence informed approaches to literacy and has led Professional Development Programmes on disciplinary vocabulary, reading fluency and reading comprehension.

Email: [jrodgers@mountsbayacademy.org](mailto:jrodgers@mountsbayacademy.org)



**LUCA  
OWENBRIDGE**

Deputy Director of Cornwall Research School

Luca Owenbridge is a History and Maths teacher based in Penzance, Cornwall. He came to teaching after working as a Policy Analyst for the Department for Education in London.

He is currently Deputy Director of Cornwall Research School and has a particular interest in understanding the benefits of the outdoors for young people, and the role that spoken articulation can play in closing the gap for disadvantaged pupils.

He is a keen surfer, walker and writer.

Email: [lowenbridge@mountsbayacademy.org](mailto:lowenbridge@mountsbayacademy.org)

# CONTACT US



**Cornwall**  
Research  
School

Supported by the Education Endowment Foundation

[info.cornwall@researchschool.org.uk](mailto:info.cornwall@researchschool.org.uk)

[jrodgers@moutsbayacademy.org](mailto:jrodgers@moutsbayacademy.org)

01736 363240 ext.276

Mounts Bay Academy

Boscathnoe Lane

Heamoor

Penzance

TR18 3JT

## Newsletter



Education  
Endowment  
Foundation

 @RSNCornwall